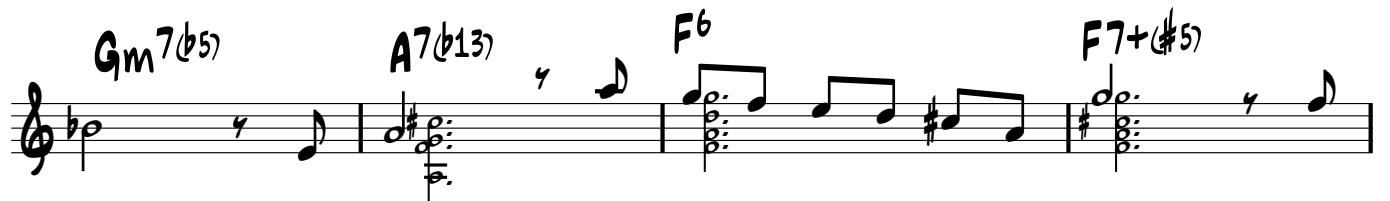
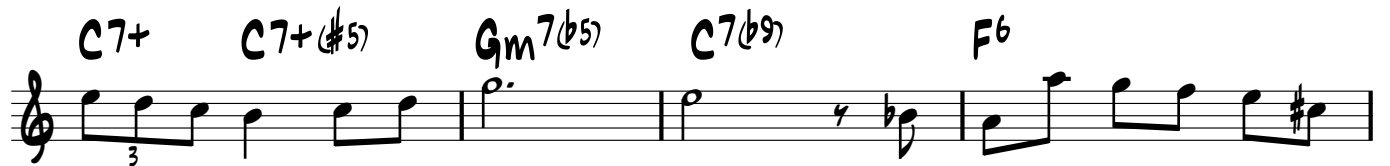
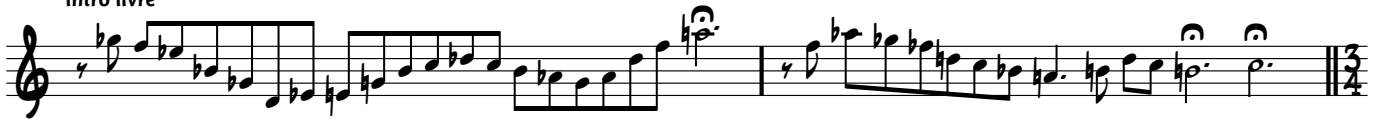


à Antonela Lucía

Assim disseste

Marco Ruviaro
10 de outubro de 2012

intro livre



♯

F6 E7(add11) E7 A7 Cm6 C#o

(violão solo até este Cm6/9; retomar violão/canto a partir de ♯)

D7(#5) Gm/Bb B°

Cm7 Am7(b5) D7(#5)

Eb7+ D7(add11) D7

G7 Bbm6 B° C7(#5) Fm/Ab

A° Eb7+/G F7(#11) Bb(#11)/Ab

Bb7(#5) Eb7+(#5) Eb(#5)

violão solo do início até o fatídico acorde de Cm6/9